

INVEST IN YOUR FUTURE

NEXT POINT CONDOMINIUM IS A  
MODERN RESIDENTIAL COMPLEX  
IN SOUTHERN PHUKET, IDEAL  
LOCATION FOR LIVING AND  
INVESTMENT

FROM STUDIOS TO PENTHOUSES WITH  
RENTAL INCOME STARTING AT 6% PER YEAR



## EXTERIER

### 90% view apartments

The unique shape of the condominium allows you to see the views of the azure sea, tropical landscapes and the Big Buddha - the famous symbol of Phuket



### Next Point Condominium

A new step in the development of comfortable and modern housing. We create a space equipped with all the amenities in one place

# ADVANTAGES



## All-in-one infrastructure

Panoramic infinity pool, rooftop bar, restaurant and shops, open-air cinema, coworking, spa area, gym and kids' club - everything for your convenience and relaxation



## Investment opportunities

Projected annual rental yield from 6% and property value increase of up to 40% by the time the complex is completed



## Layouts from 35 m to 270 m

Spacious studios, one- and two-bedroom apartments, as well as luxury penthouses - everyone will find a space that suits their lifestyle



# INTERIOR

## 1 Design

Light-toned interior with minimalist elements, created by a European design studio

## 2 Furniture

Elegant furniture from Italy, made according to an individual design project

## 3 Smart home system

Innovative solutions for your convenience

## 4 Plumbing and utility systems

from leading European manufacturers



## INTERIOR



### Studios

Discover studios with a view in sunny Phuket – an ideal place for a full-fledged vacation and a investment opportunity

The main advantage of studios is their ergonomic space that combines comfort and functionality

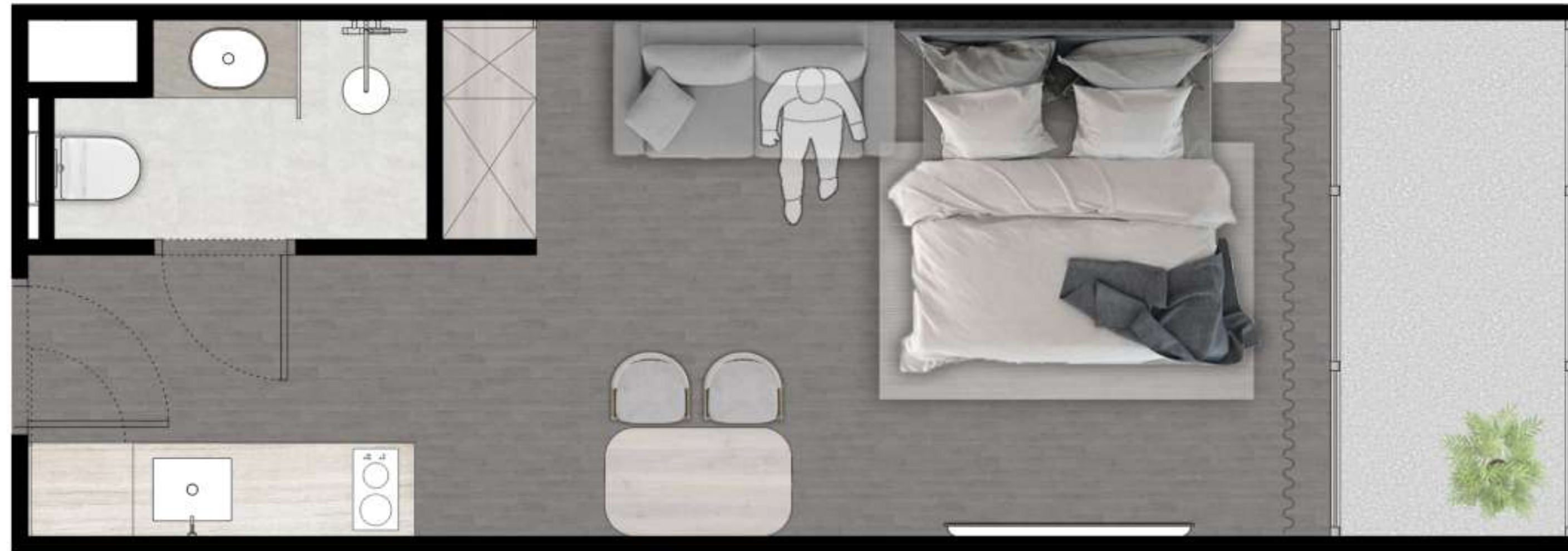
Area: from 35 to 51 m<sup>2</sup>

Living room and kitchen: from 29 m<sup>2</sup>

Bathroom: from 4,6 m<sup>2</sup>

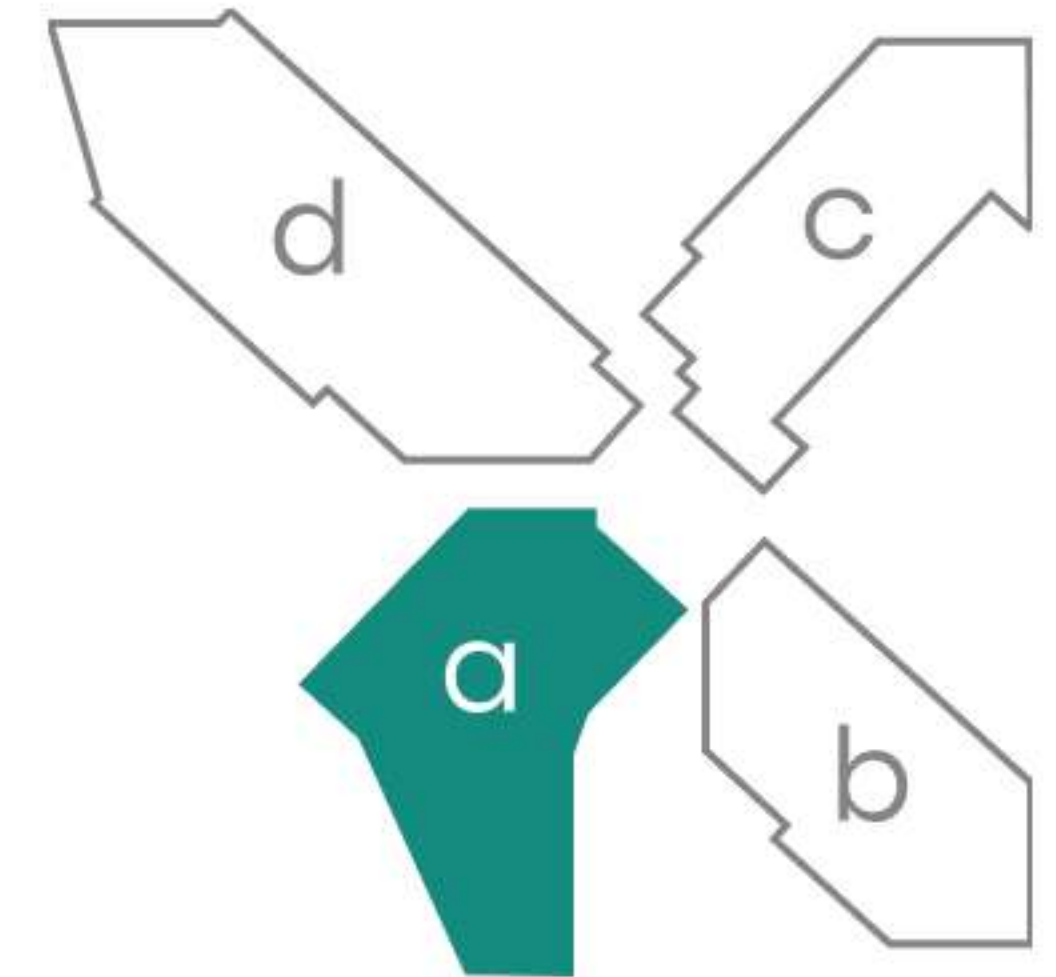
Balcony: from 4,2 m<sup>2</sup>

# STUDIO-C



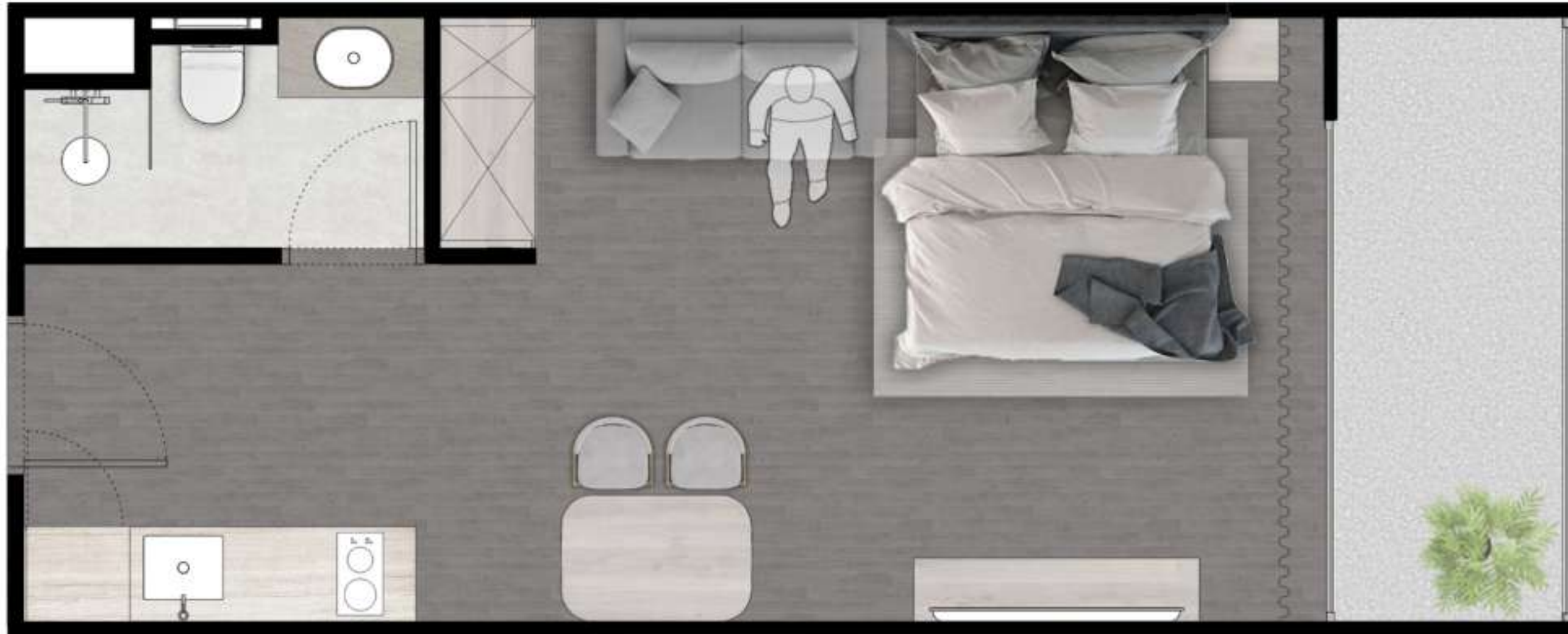
## Building A

From 2-nd to 7-th floor



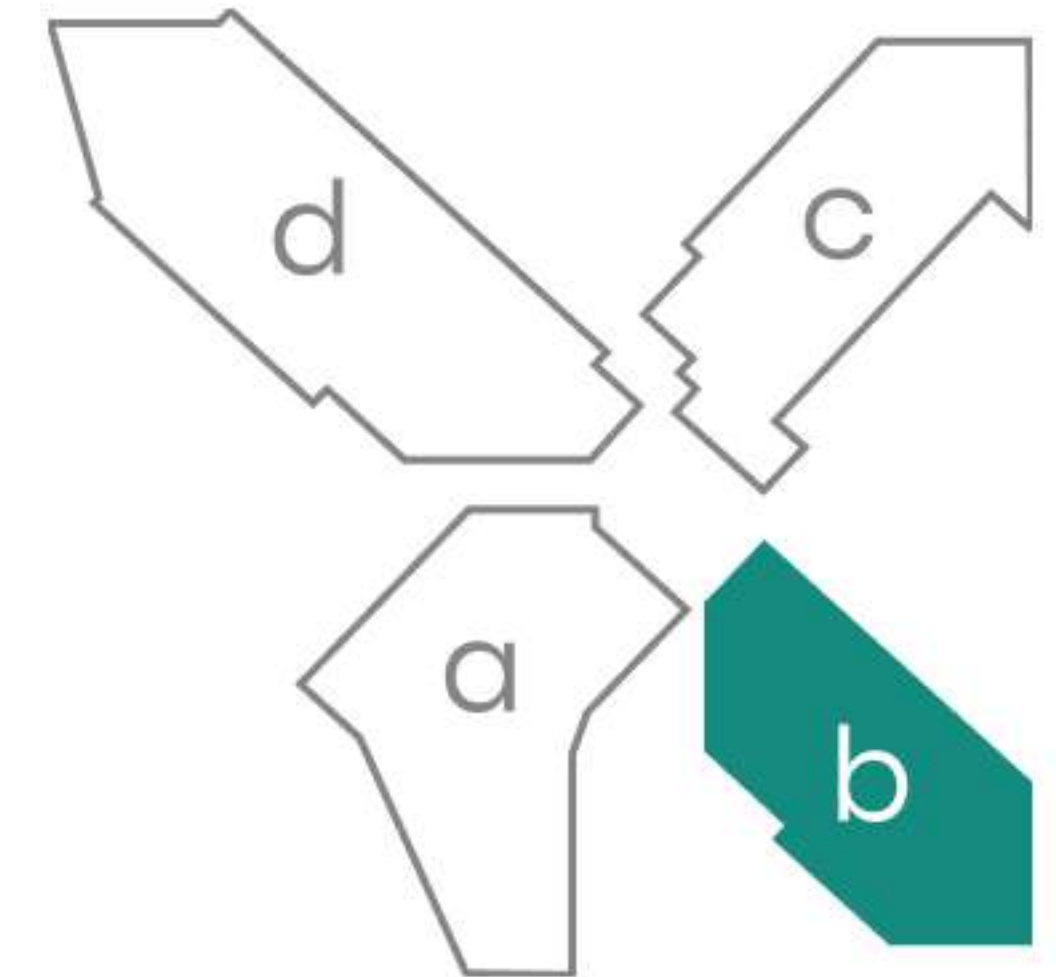
Area:	35 m <sup>2</sup>
Living room and kitchen:	25,15 m <sup>2</sup>
Bathroom:	4,6 m <sup>2</sup>
Balcony:	5,25 m <sup>2</sup>

# STUDIO-A



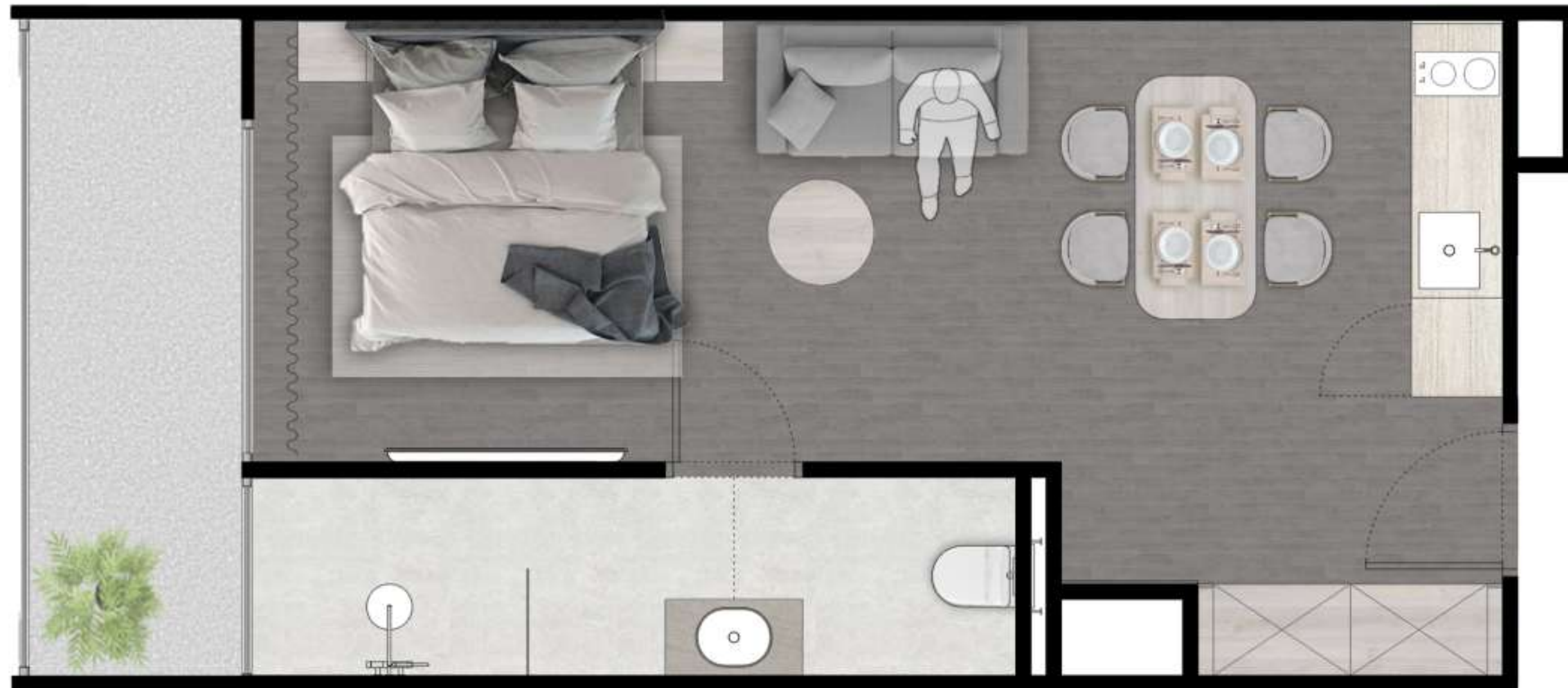
## Building B

From 1-st to 7-th floor



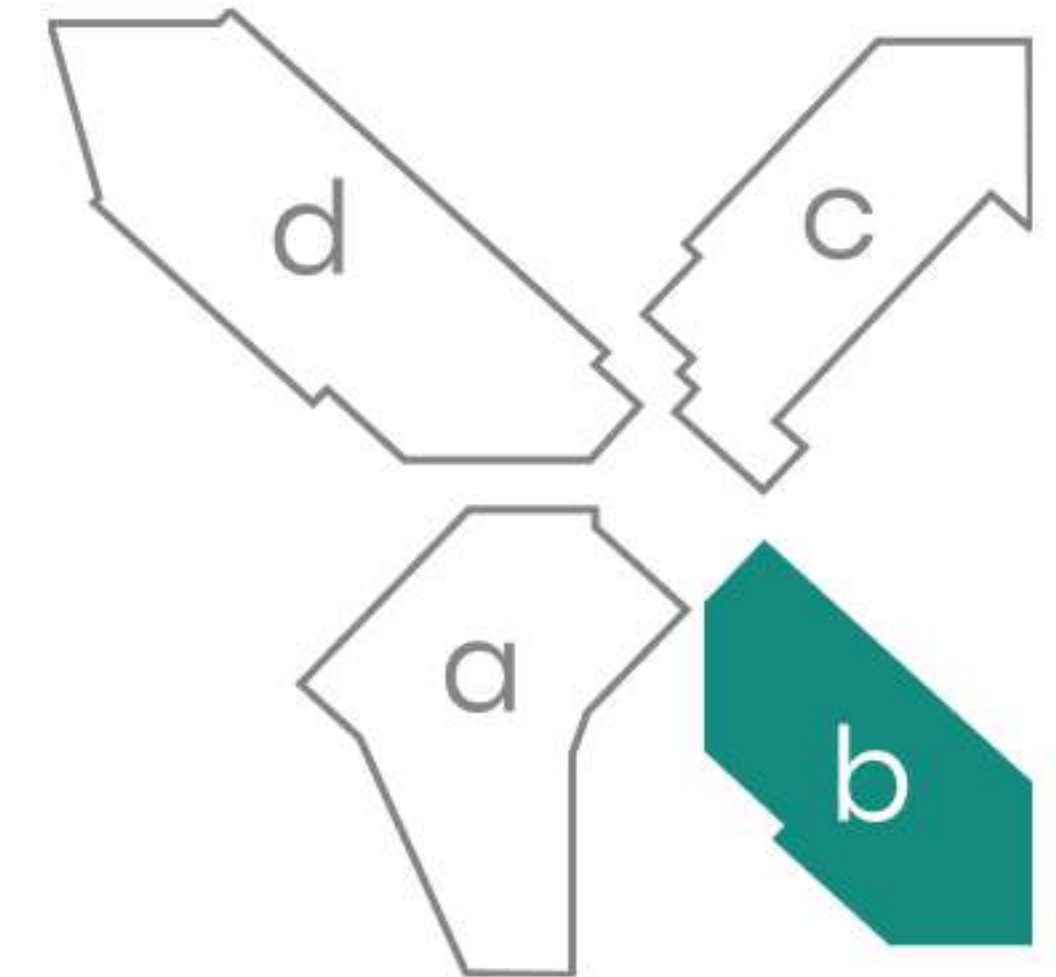
Area:	39,6 m <sup>2</sup>
Living room and kitchen:	29 m <sup>2</sup>
Bathroom:	4,6 m <sup>2</sup>
Balcony:	6 m <sup>2</sup>

# STUDIO-B



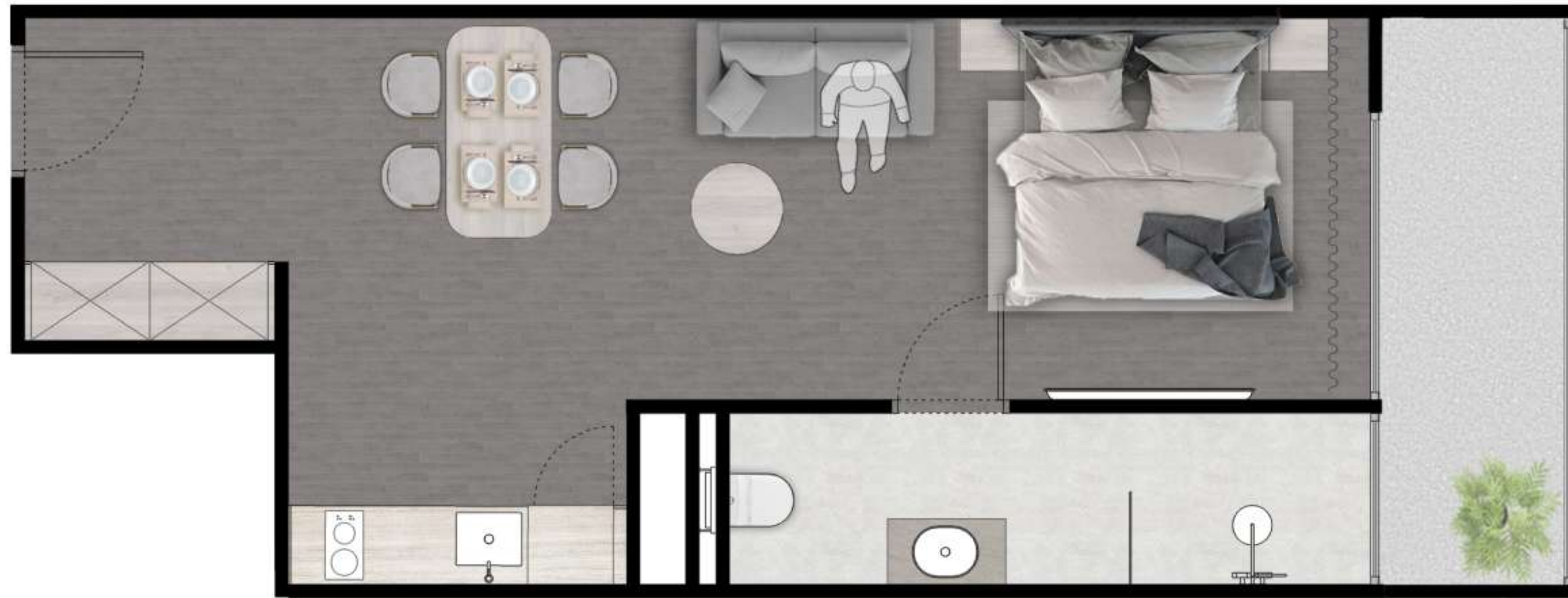
## Building B

From 1-st to 7-th floor



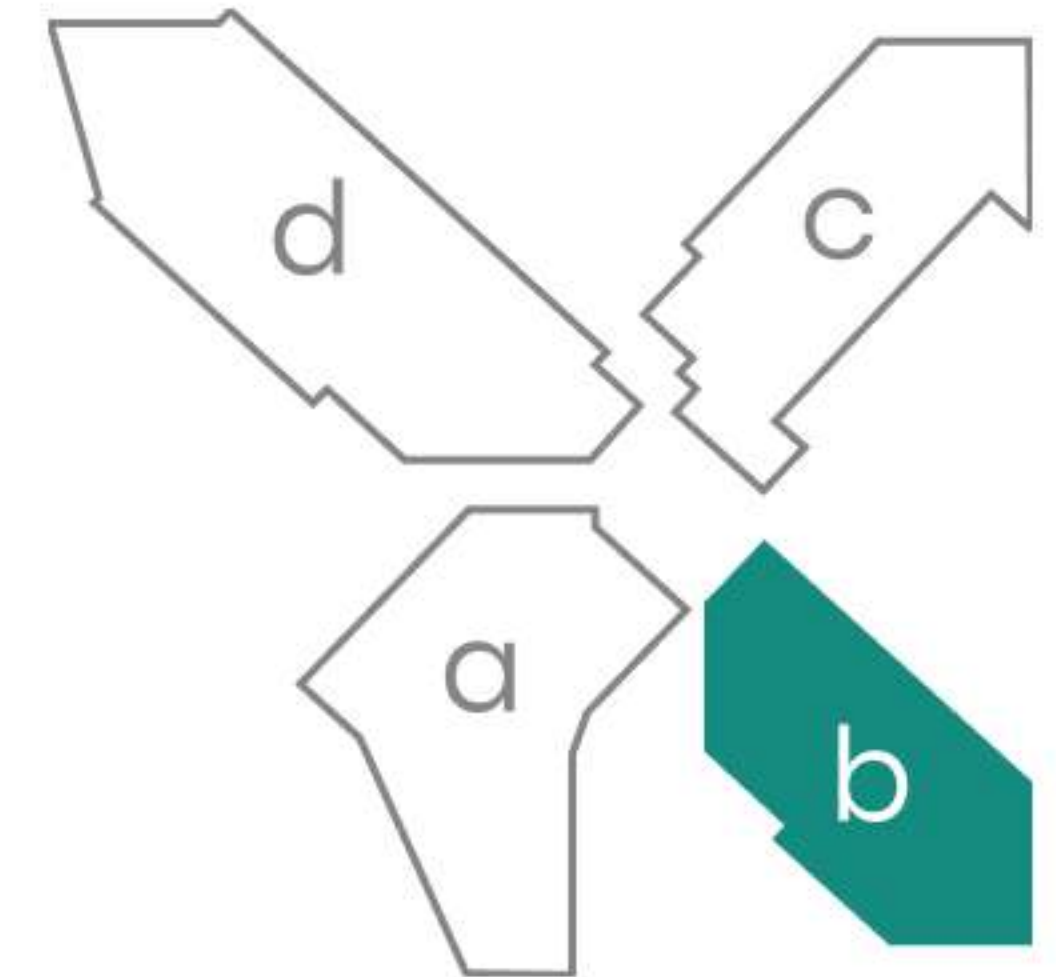
Area:	44,55 m <sup>2</sup>
Living room and kitchen:	29,7 m <sup>2</sup>
Bathroom:	8,1 m <sup>2</sup>
Balcony:	6,75 m <sup>2</sup>

# STUDIO-B1



## Building B

From 1-st to 7-th floor



Area:	49,85 m <sup>2</sup>
Living room and kitchen:	35 m <sup>2</sup>
Bathroom:	8,1 m <sup>2</sup>
Balcony:	6,75 m <sup>2</sup>