

INVEST IN YOUR FUTURE

NEXT POINT CONDOMINIUM IS A  
MODERN RESIDENTIAL COMPLEX  
IN SOUTHERN PHUKET, IDEAL  
LOCATION FOR LIVING AND  
INVESTMENT

FROM STUDIOS TO PENTHOUSES WITH  
RENTAL INCOME STARTING AT 6% PER YEAR



## EXTERIER

### 90% view apartments

The unique shape of the condominium allows you to see the views of the azure sea, tropical landscapes and the Big Buddha - the famous symbol of Phuket



### Next Point Condominium

A new step in the development of comfortable and modern housing. We create a space equipped with all the amenities in one place

# ADVANTAGES



## All-in-one infrastructure

Panoramic infinity pool, rooftop bar, restaurant and shops, open-air cinema, coworking, spa area, gym and kids' club - everything for your convenience and relaxation



## Investment opportunities

Projected annual rental yield from 6% and property value increase of up to 40% by the time the complex is completed



## Layouts from 35 m to 270 m

Spacious studios, one- and two-bedroom apartments, as well as luxury penthouses - everyone will find a space that suits their lifestyle



# INTERIOR

## 1 Design

Light-toned interior with minimalist elements, created by a European design studio

## 2 Furniture

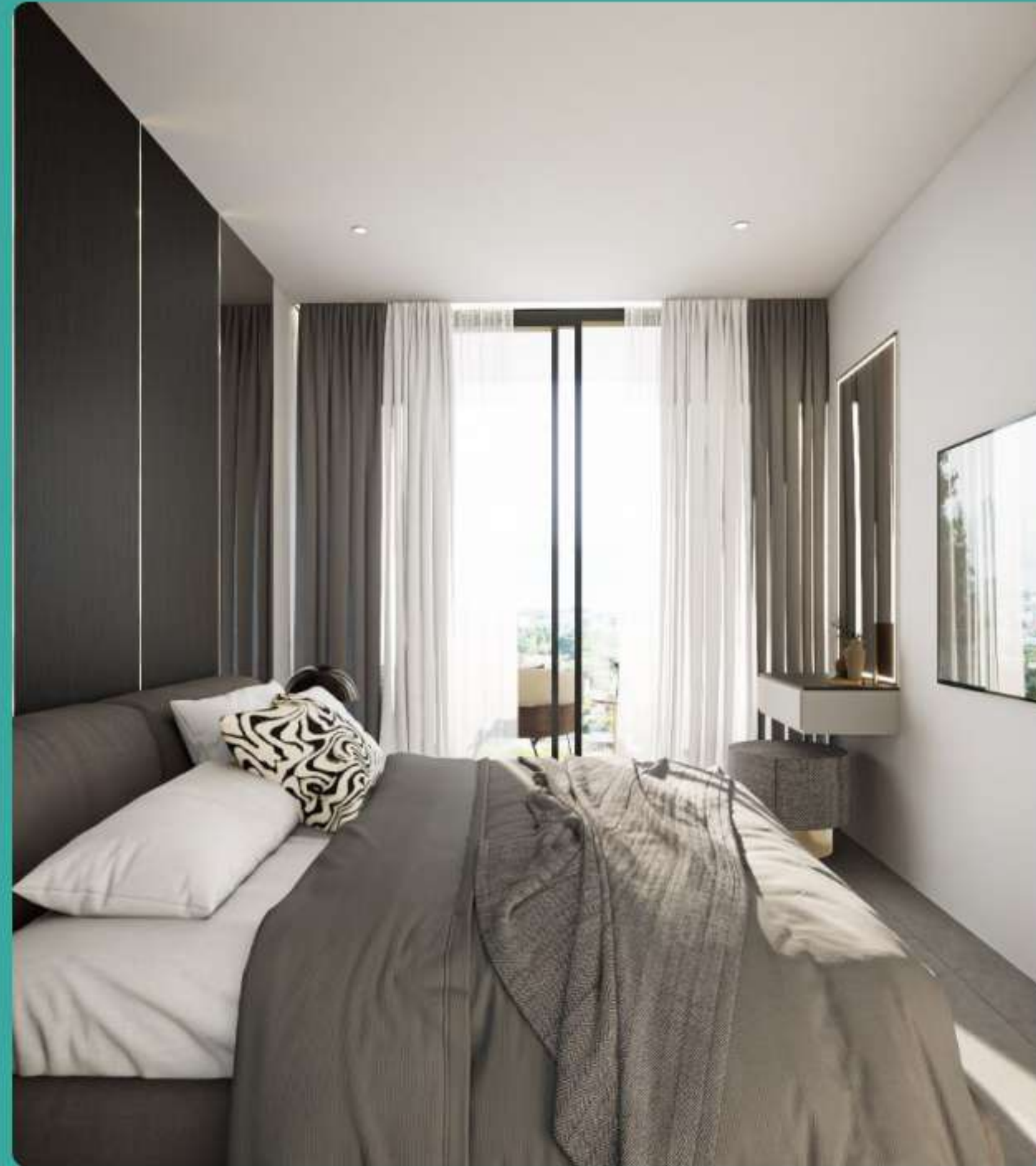
Elegant furniture from Italy, made according to an individual design project

## 3 Smart home system

Innovative solutions for your convenience

## 4 Plumbing and utility systems

from leading European manufacturers



# INTERIOR



## 2-Room Apartments

Discover 2-room apartments with a view in sunny Phuket – an ideal place for a full-fledged vacation and a promising investment

Thoughtful layouts with master bedrooms, panoramic windows, separate dressing rooms, and bathrooms

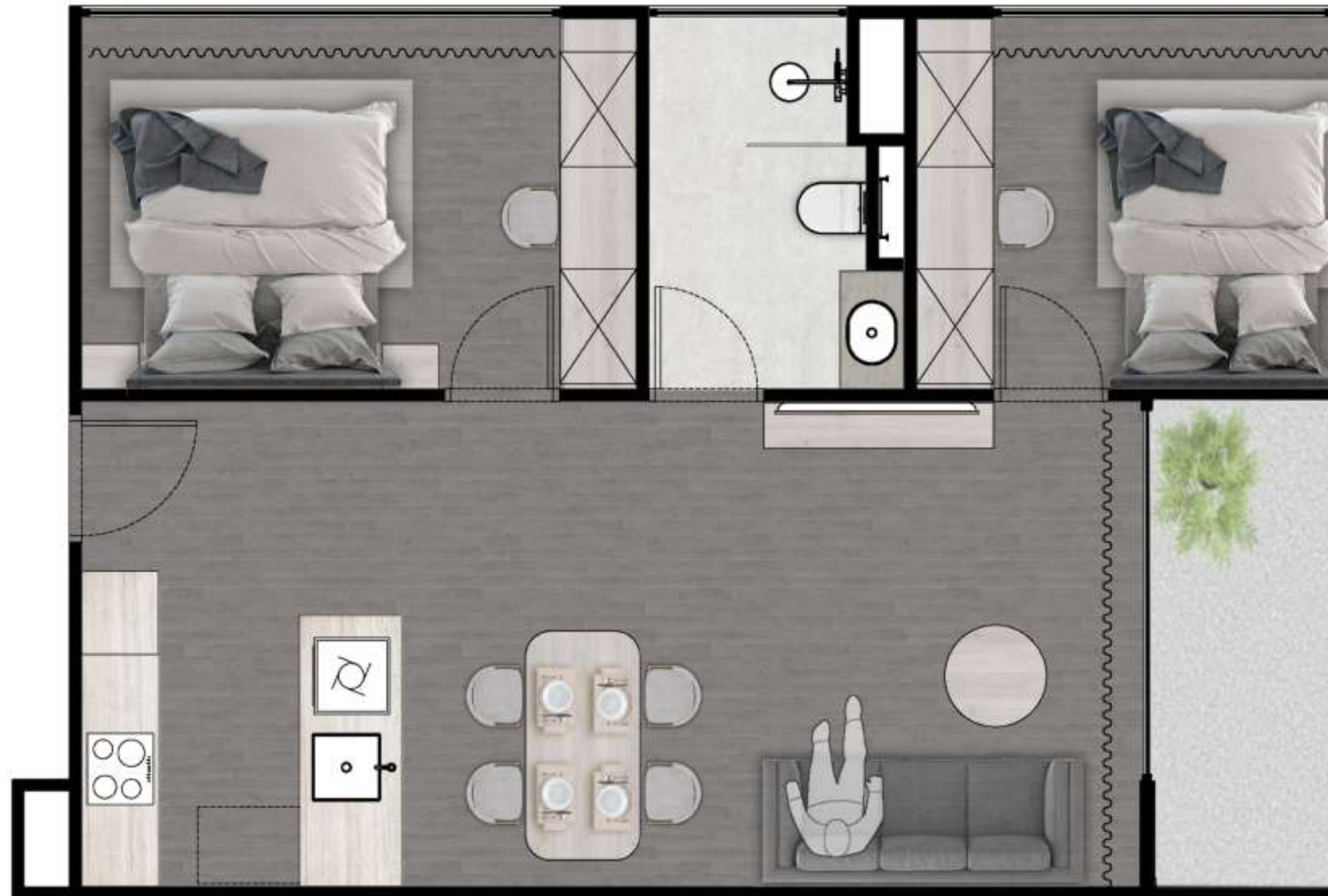
Area: from 70 m<sup>2</sup>

Living room and kitchen: from 32 m<sup>2</sup>

Bathroom: from 4,45 m<sup>2</sup>

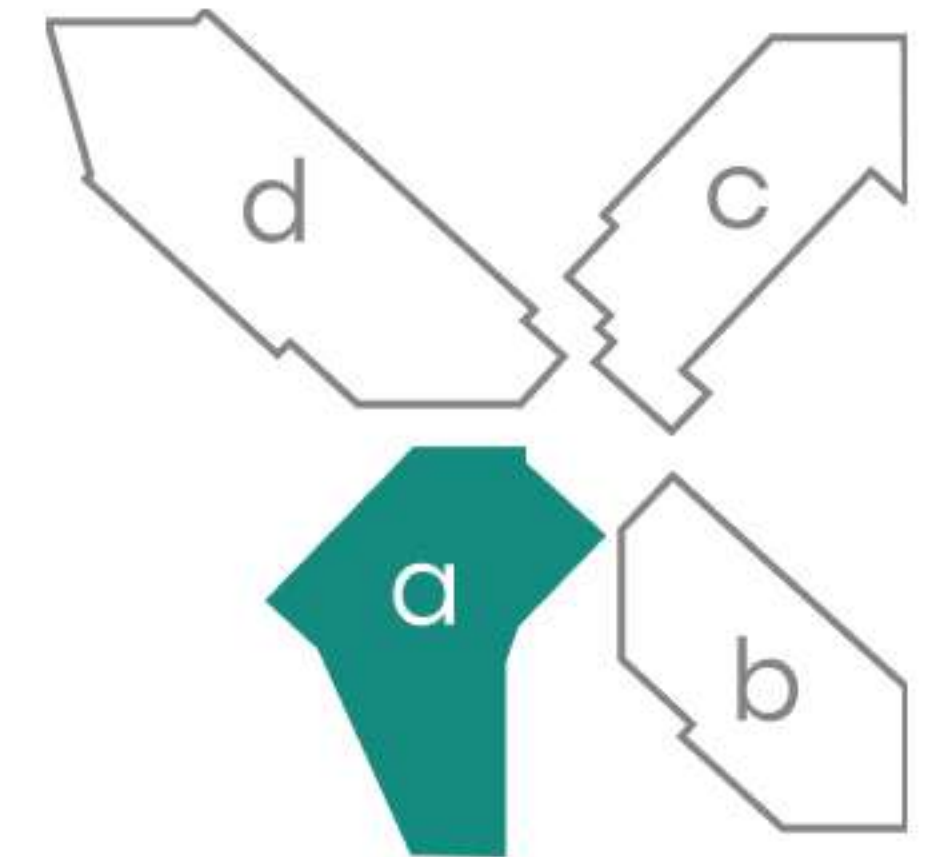
Bedroom: from 11 m<sup>2</sup>

## 2-BEDROOM APARTMENTS - H



### Building A

From 2-nd to 7-th floor



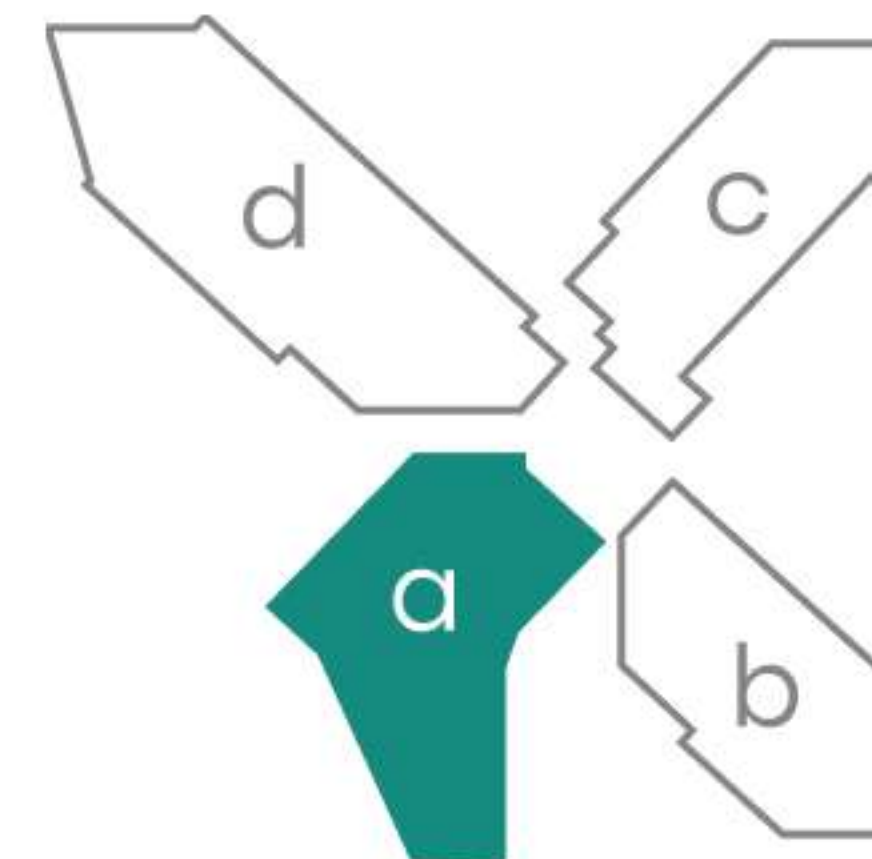
<b>Area:</b>	70 m <sup>2</sup>
<b>Living room and kitchen:</b>	35,2 m <sup>2</sup>
<b>Bedroom - 1, 2:</b>	1 - 13,05 m <sup>2</sup> , 2 - 11 m <sup>2</sup>
<b>Bathroom:</b>	4,45 m <sup>2</sup>
<b>Balcony:</b>	6,15 m <sup>2</sup>

## 2-BEDROOM APARTMENTS - G



### Building A

From 2-nd to 7-th floor



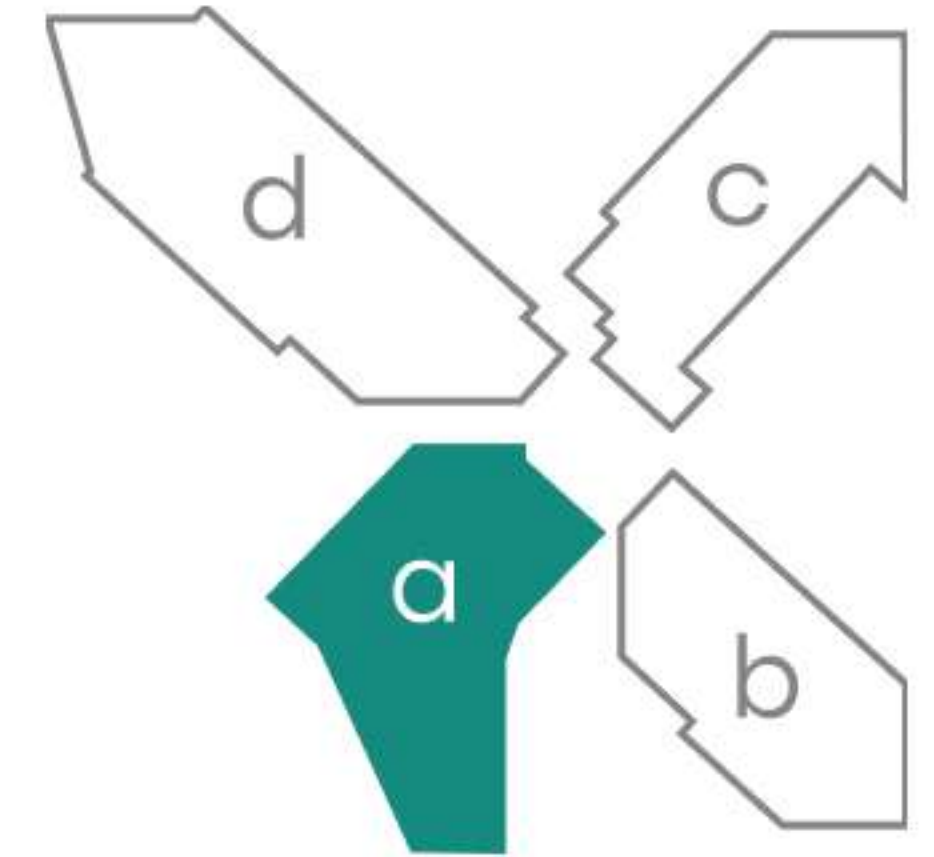
<b>Area:</b>	84,4 m <sup>2</sup>
<b>Living room and kitchen:</b>	32,1 m <sup>2</sup>
<b>Bedroom - 1, 2:</b>	1 - 13,5 m <sup>2</sup> , 2 - 15,9 m <sup>2</sup>
<b>Bathroom - 1, 2:</b>	1 - 6,7 m <sup>2</sup> , 2 - 8,6 m <sup>2</sup>
<b>Balcony:</b>	7.6 m <sup>2</sup>

## 2-BEDROOM APARTMENTS - E



### Building A

From 2-nd to 7-th floor



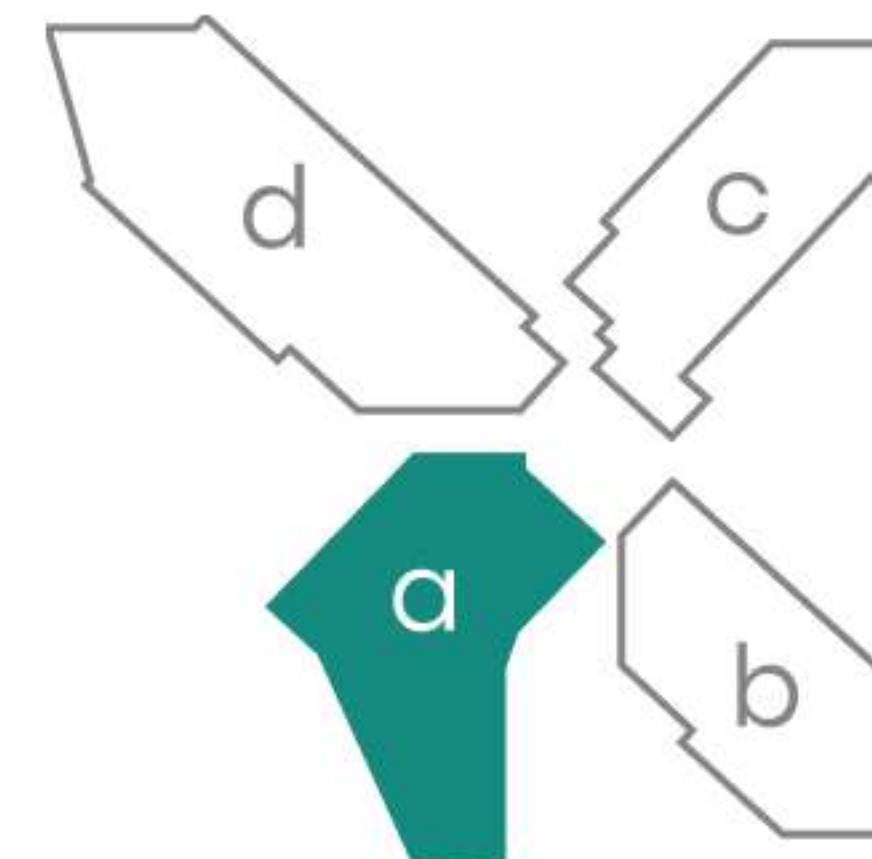
<b>Area:</b>	94,62 m <sup>2</sup>
<b>Living room and kitchen:</b>	34,74 m <sup>2</sup>
<b>Bedroom - 1, 2:</b>	1 - 22 m <sup>2</sup> , 2 - 18,6 m <sup>2</sup>
<b>Bathroom - 1, 2:</b>	1 - 7,4 m <sup>2</sup> , 2 - 7,1 m <sup>2</sup>
<b>Balcony:</b>	4,78 m <sup>2</sup>

## 2-BEDROOM APARTMENTS - F



### Building A

From 2-nd to 7-th floor



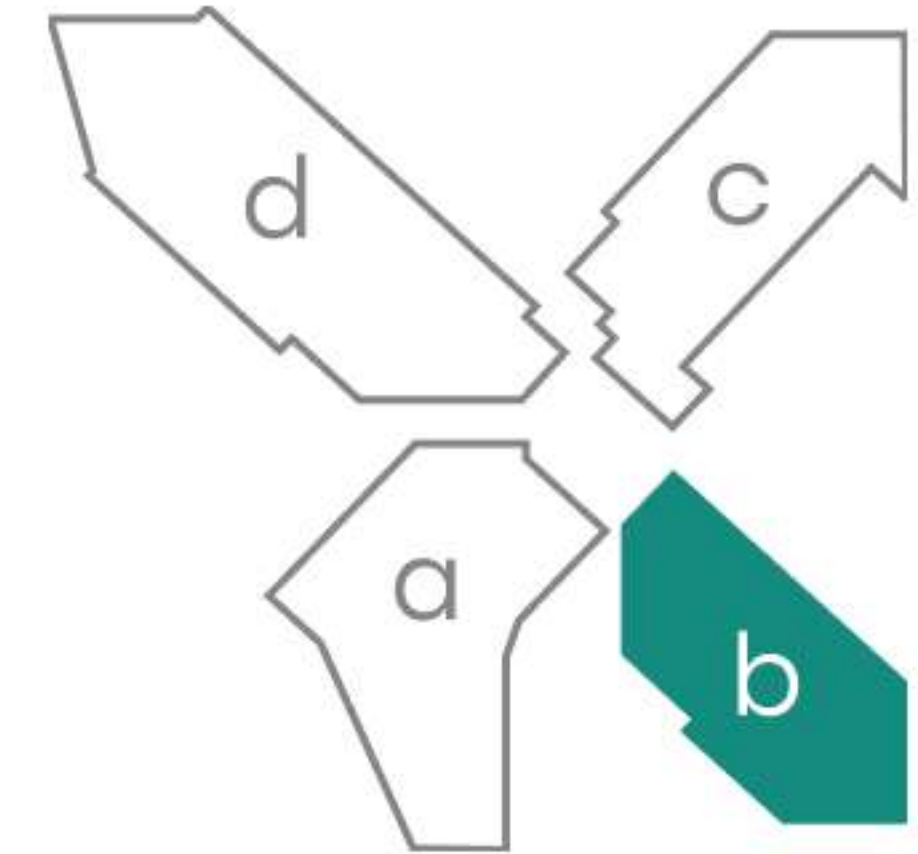
<b>Area:</b>	99,22 m <sup>2</sup>
<b>Living room and kitchen:</b>	44,23 m <sup>2</sup>
<b>Bedroom - 1, 2:</b>	1 - 17,38 m <sup>2</sup> , 2 - 14,68 m <sup>2</sup>
<b>Bathroom - 1, 2:</b>	1 - 7,02 m <sup>2</sup> , 2 - 11,04 m <sup>2</sup>
<b>Balcony:</b>	4,87 m <sup>2</sup>

## 2-BEDROOM APARTMENTS - A



### Building B

From 1-st to 7-th floor



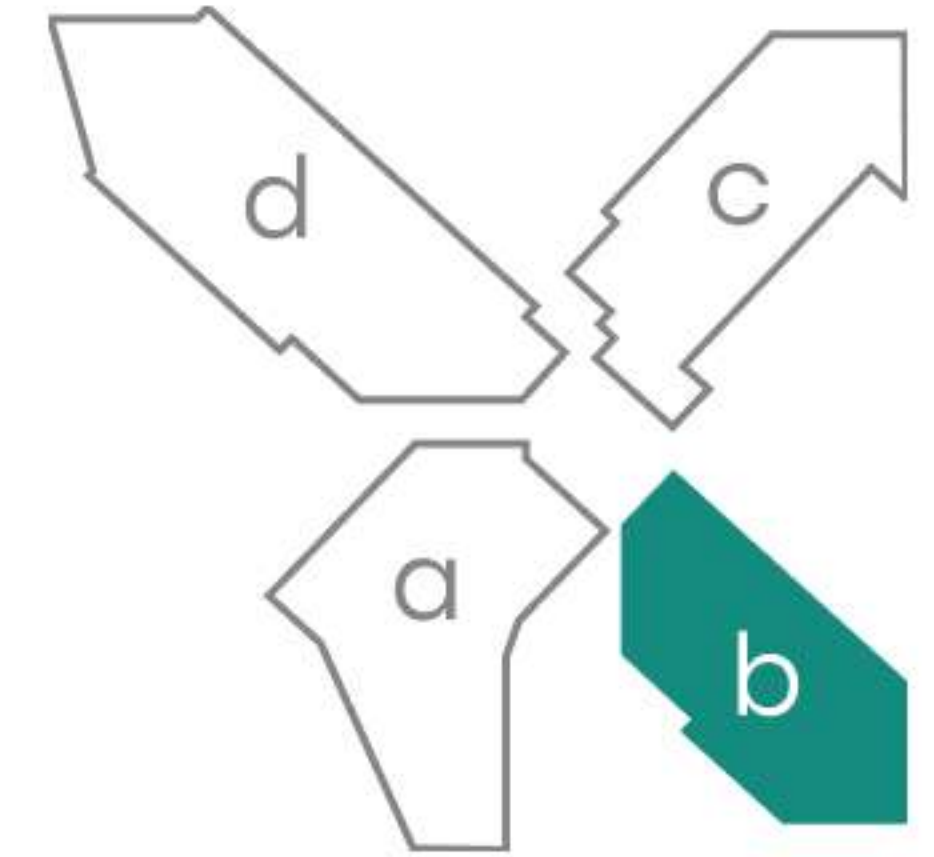
<b>Area:</b>	89,1 m <sup>2</sup>
<b>Living room and kitchen:</b>	34,15 m <sup>2</sup>
<b>Bedroom - 1, 2:</b>	1 - 15,1 m <sup>2</sup> , 2 - 15,4 m <sup>2</sup>
<b>Bathroom - 1, 2:</b>	1 - 7,95 m <sup>2</sup> , 2 - 7,8 m <sup>2</sup>
<b>Balcony - 1, 2:</b>	1 - 4,5 m <sup>2</sup> , 2 - 4,2 m <sup>2</sup>

## 2-BEDROOM APARTMENTS - A3



### Building B

From 1-st to 7-th floor



<b>Area:</b>	94,6 m <sup>2</sup>
<b>Living room and kitchen:</b>	34,15 m <sup>2</sup>
<b>Bedroom - 1, 2:</b>	1 - 15,1 m <sup>2</sup> , 2 - 15,4 m <sup>2</sup>
<b>Bathroom - 1, 2:</b>	1 - 7,95 m <sup>2</sup> , 2 - 7,8 m <sup>2</sup>
<b>Balcony - 1, 2:</b>	1 - 4,2 m <sup>2</sup> , 2 - 4,5 m <sup>2</sup>
<b>ГАРДЕРОБНАЯ:</b>	5,5 m <sup>2</sup>