

INVEST IN YOUR FUTURE

NEXT POINT CONDOMINIUM IS A  
MODERN RESIDENTIAL COMPLEX  
IN SOUTHERN PHUKET, IDEAL  
LOCATION FOR LIVING AND  
INVESTMENT

FROM STUDIOS TO PENTHOUSES WITH  
RENTAL INCOME STARTING AT 6% PER YEAR



## EXTERIER

### 90% view apartments

The unique shape of the condominium allows you to see the views of the azure sea, tropical landscapes and the Big Buddha - the famous symbol of Phuket



### Next Point Condominium

A new step in the development of comfortable and modern housing. We create a space equipped with all the amenities in one place

# ADVANTAGES



## All-in-one infrastructure

Panoramic infinity pool, rooftop bar, restaurant and shops, open-air cinema, coworking, spa area, gym and kids' club - everything for your convenience and relaxation



## Investment opportunities

Projected annual rental yield from 6% and property value increase of up to 40% by the time the complex is completed



## Layouts from 35 m to 270 m

Spacious studios, one- and two-bedroom apartments, as well as luxury penthouses - everyone will find a space that suits their lifestyle



# INTERIOR

## 1 Design

Light-toned interior with minimalist elements, created by a European design studio

## 2 Furniture

Elegant furniture from Italy, made according to an individual design project

## 3 Smart home system

Innovative solutions for your convenience

## 4 Plumbing and utility systems

from leading European manufacturers



# INTERIOR



**Penthouses**  
Penthouses in Next Point Condominium are truly a dream come true. Each apartment is unique and offers stunning views from private terraces of the sea, mountains, or tropics, creating an atmosphere of privacy in harmony with nature  
This is the perfect choice for those who value comfort, style, and status at one of the world's best resorts

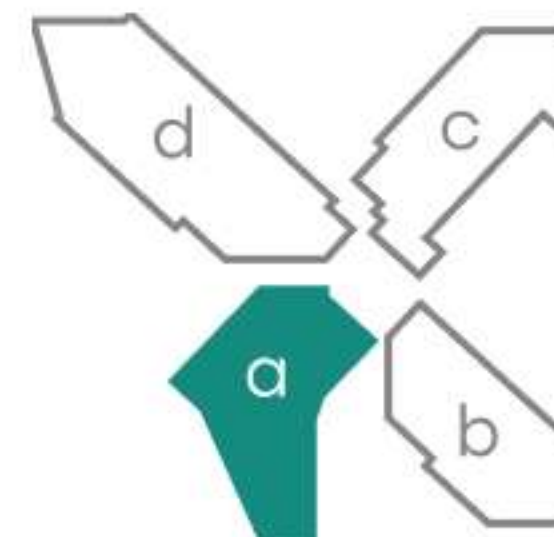
Area:	OT 55,08 M <sup>2</sup>
Living room and kitchen:	OT 30,6 M <sup>2</sup>
Bathroom:	OT 4,45 M <sup>2</sup>
Bedroom:	OT 11,15 M <sup>2</sup>

## PENTHOUSE - 1BR-2



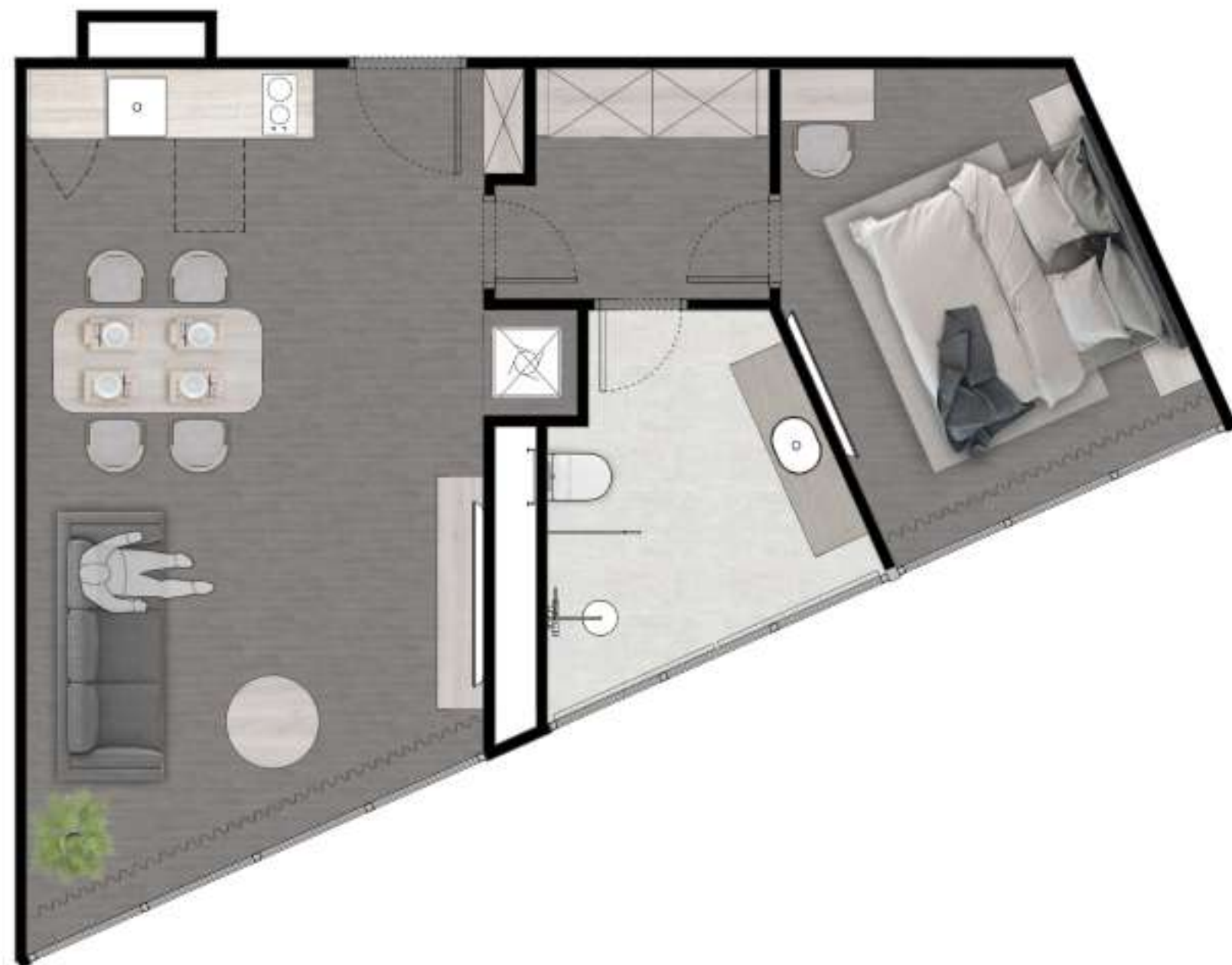
### Корпус А

Со 2-го по 7-й этаж



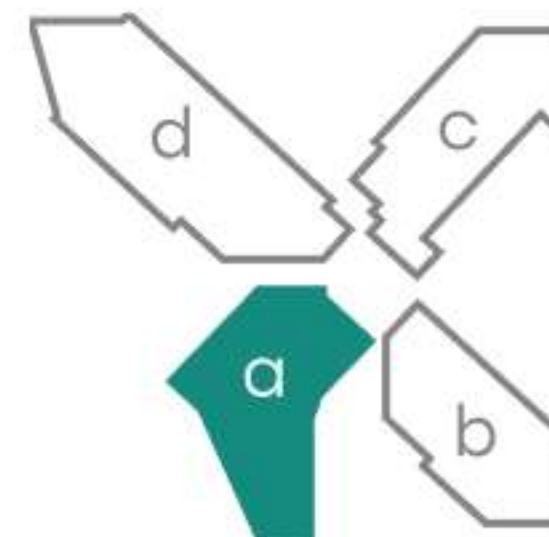
<b>Area:</b>	69,95 м <sup>2</sup>
<b>Living room and kitchen:</b>	41,17 м <sup>2</sup>
<b>Bedroom:</b>	18 м <sup>2</sup>
<b>Bathroom:</b>	6,15 м <sup>2</sup>
<b>Balcony:</b>	4,63 м <sup>2</sup>

## PENTHOUSE - 1BR-D



### Корпус А

Со 2-го по 7-й этаж



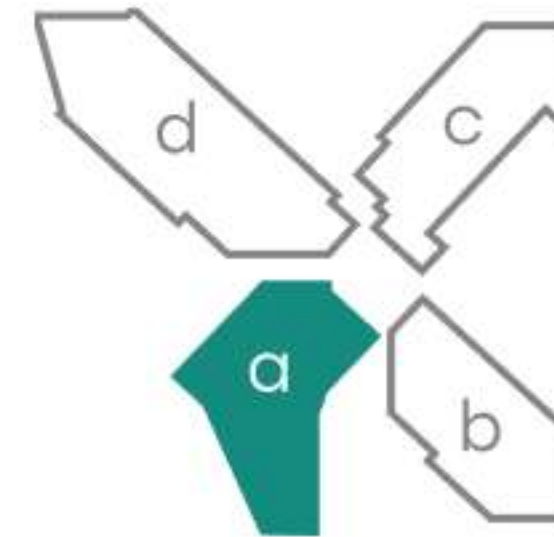
<b>Area:</b>	55,08 м <sup>2</sup>
<b>Living room and kitchen:</b>	36,0 м <sup>2</sup>
<b>Bedroom :</b>	12,73 м <sup>2</sup>
<b>Bathroom :</b>	6,35 м <sup>2</sup>
<b>Balcony:</b>	- м <sup>2</sup>

## PENTHOUSE - 2BR-F



### Корпус А

Со 2-го по 7-й этаж



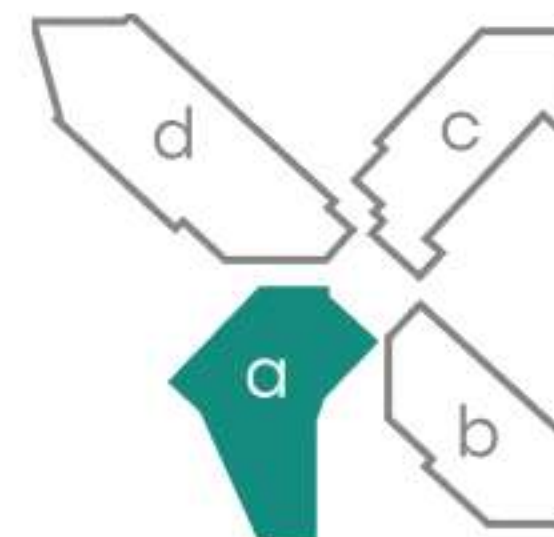
<b>Area:</b>	99,22 м <sup>2</sup>
<b>Living room and kitchen:</b>	44,23 м <sup>2</sup>
<b>Bedroom - 1:</b>	17,38 м <sup>2</sup>
<b>Bedroom- 2:</b>	14,68 м <sup>2</sup>
<b>Bathroom - 1:</b>	7,02 м <sup>2</sup>
<b>Bathroom - 2:</b>	11,04 м <sup>2</sup>
<b>Balcony:</b>	4,87 м <sup>2</sup>

## PENTHOUSE - 2BR-E



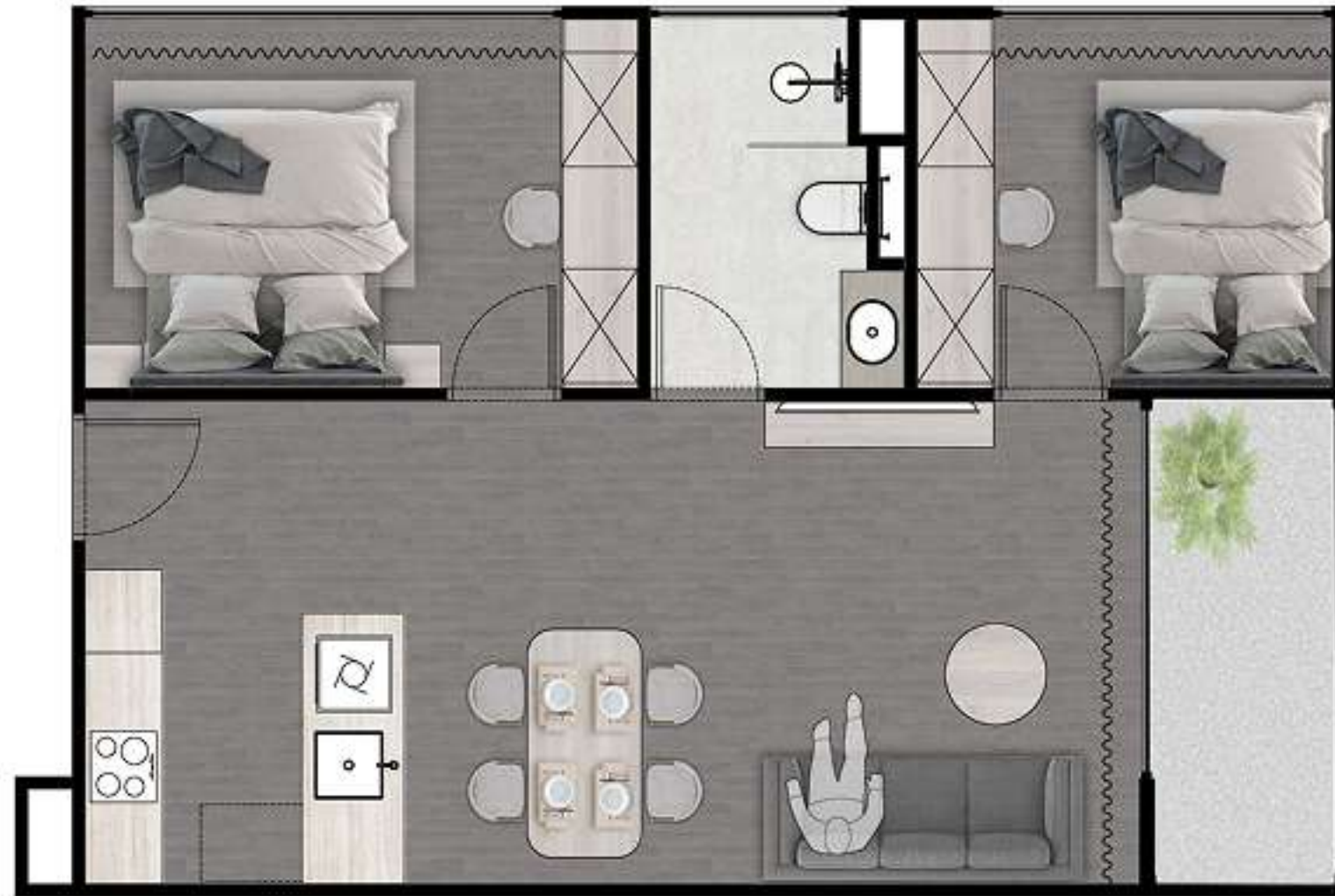
### Корпус А

Со 2-го по 7-й этаж



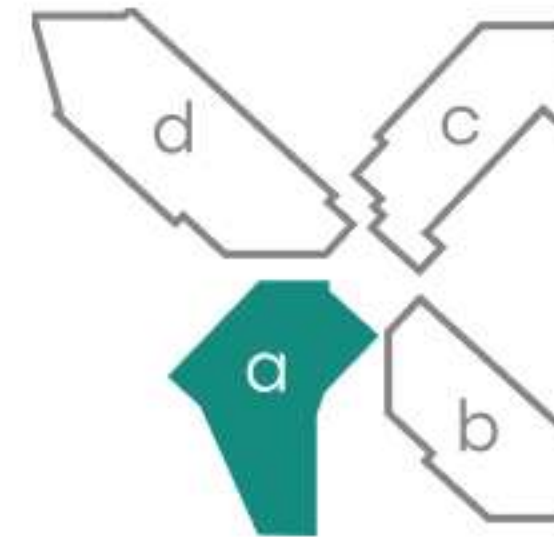
<b>Area:</b>	94,62 м <sup>2</sup>
<b>Living room and kitchen:</b>	34,74 м <sup>2</sup>
<b>Bedroom - 1:</b>	22,0 м <sup>2</sup>
<b>Bedroom - 2:</b>	18,6 м <sup>2</sup>
<b>Bathroom - 1:</b>	7,4 м <sup>2</sup>
<b>Bathroom - 2:</b>	7,1 м <sup>2</sup>
<b>Balcony:</b>	4,78 м <sup>2</sup>

## PENTHOUSE - 2BR-H



### Корпус А

Со 2-го по 7-й этаж



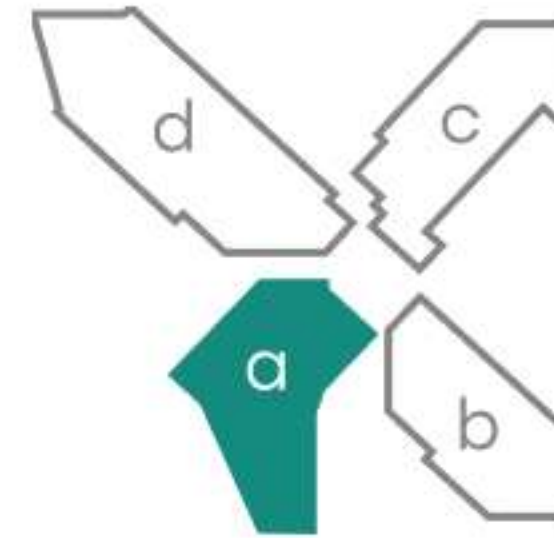
<b>Area:</b>	70,0 м <sup>2</sup>
<b>Living room and kitchen:</b>	35,2 м <sup>2</sup>
<b>Bedroom - 1:</b>	13,05 м <sup>2</sup>
<b>Bedroom - 2:</b>	11,15 м <sup>2</sup>
<b>Bathroom:</b>	4,45 м <sup>2</sup>
<b>Balcony:</b>	6,15 м <sup>2</sup>

## PENTHOUSE - 2BR-G



### Корпус А

Со 2-го по 7-й этаж



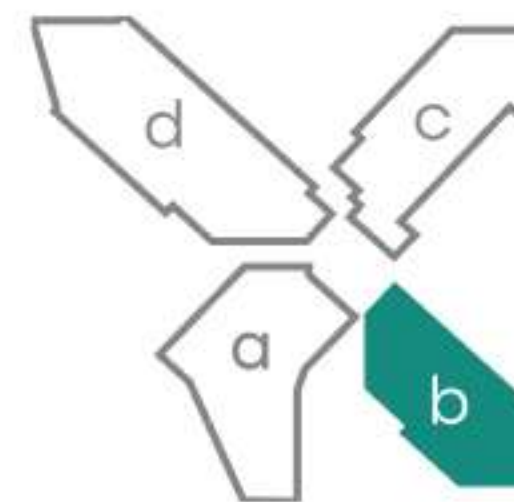
<b>Area:</b>	84,4 м <sup>2</sup>
<b>Living room and kitchen:</b>	32,1 м <sup>2</sup>
<b>Bedroom - 1:</b>	13,5 м <sup>2</sup>
<b>Bedroom - 2:</b>	15,9 м <sup>2</sup>
<b>Bathroom - 1:</b>	6,7 м <sup>2</sup>
<b>Bathroom - 2:</b>	8,6 м <sup>2</sup>
<b>Balcony:</b>	7,6 м <sup>2</sup>

## PENTHOUSE - 1BR-A1



### Корпус В

С 1-го по 7-й этаж



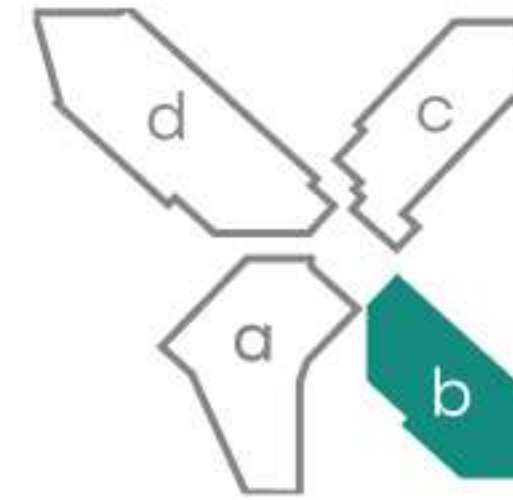
<b>Area:</b>	67,6 м <sup>2</sup>
<b>Living room and kitchen:</b>	36,1 м <sup>2</sup>
<b>Bedroom:</b>	15,1 м <sup>2</sup>
<b>Bathroom:</b>	7,8 м <sup>2</sup>
<b>Balcony:</b>	4,2 м <sup>2</sup>
<b>Walk-in closet:</b>	4,4 м <sup>2</sup>

## PENTHOUSE - 2BR-A3



### Корпус В

С 1-го по 7-й этаж



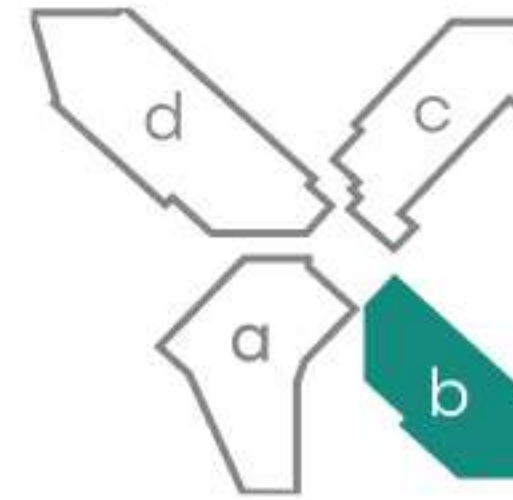
<b>Area:</b>	94,6 м <sup>2</sup>
<b>Living room and kitchen:</b>	34,15 м <sup>2</sup>
<b>Bedroom - 1:</b>	15,1 м <sup>2</sup>
<b>Bedroom - 2:</b>	15,4 м <sup>2</sup>
<b>Bathroom - 1:</b>	7,95 м <sup>2</sup>
<b>Bathroom - 2:</b>	7,8 м <sup>2</sup>
<b>Balcony - 1:</b>	4,2 м <sup>2</sup>
<b>Balcony - 2:</b>	4,5 м <sup>2</sup>
<b>Walk-in closet:</b>	5,5 м <sup>2</sup>

## PENTHOUSE - 2BR-A



### Корпус В

С 1-го по 7-й этаж



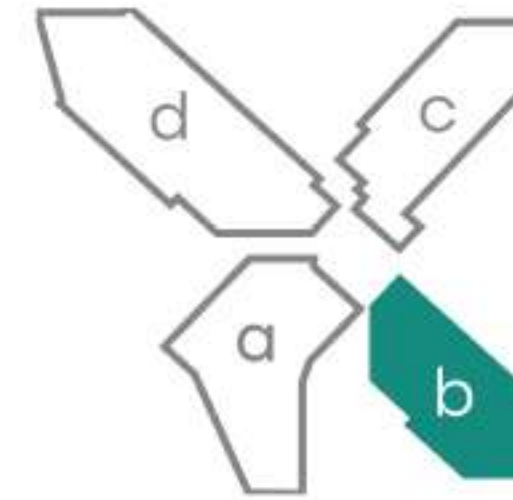
<b>Area:</b>	89,1 м <sup>2</sup>
<b>Living room and kitchen:</b>	34,15 м <sup>2</sup>
<b>Bedroom - 1:</b>	15,1 м <sup>2</sup>
<b>Bedroom - 2:</b>	15,4 м <sup>2</sup>
<b>Bathroom - 1:</b>	7,95 м <sup>2</sup>
<b>Bathroom - 2:</b>	7,8 м <sup>2</sup>
<b>Balcony - 1:</b>	4,5 м <sup>2</sup>
<b>Balcony - 2:</b>	4,2 м <sup>2</sup>

## PENTHOUSE - 2BR-4



### Корпус В

С 1-го по 7-й этаж



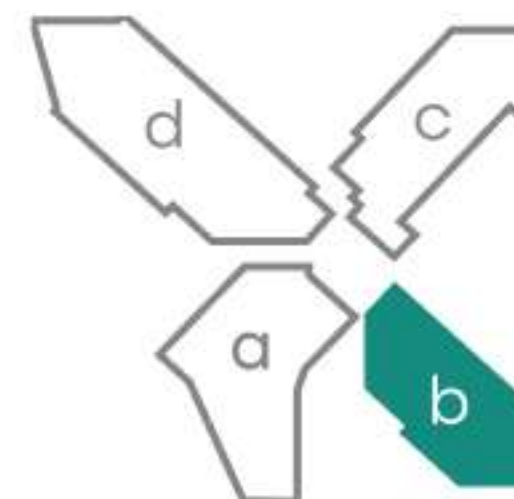
<b>Area:</b>	133,8 м <sup>2</sup>
<b>Living room and kitchen:</b>	40,24 м <sup>2</sup>
<b>Bedroom - 1:</b>	27,1 м <sup>2</sup>
<b>Bedroom - 2:</b>	22,05 м <sup>2</sup>
<b>Bathroom - 1:</b>	7,9 м <sup>2</sup>
<b>Bathroom - 2:</b>	9,75 м <sup>2</sup>
<b>Bathroom - 3:</b>	5,25 м <sup>2</sup>
<b>Balcony:</b>	21,51 м <sup>2</sup>

## PENTHOUSE- 3BR-2



### Корпус В

С 1-го по 7-й этаж



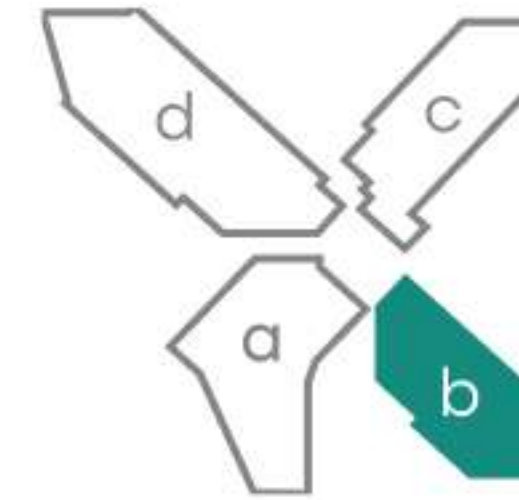
Area:	118,79 м <sup>2</sup>
Living room and kitchen:	30,6 м <sup>2</sup>
Bedroom - 1:	18,6 м <sup>2</sup>
Bedroom - 2:	17,7 м <sup>2</sup>
Bedroom - 3:	11,66 м <sup>2</sup>
Bathroom - 1:	6,16 м <sup>2</sup>
Bathroom - 2:	5,50 м <sup>2</sup>
Balcony - 1:	4,5 м <sup>2</sup>
Balcony - 2:	9,0 м <sup>2</sup>
Hall:	15,07 м <sup>2</sup>

## PENTHOUSE - 3BR-3



### Корпус В

С 1-го по 7-й этаж



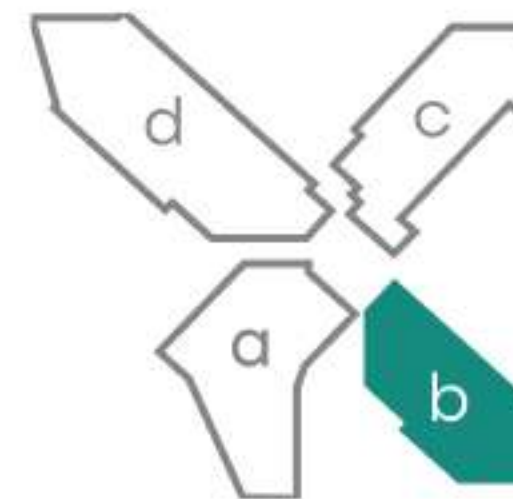
<b>Area:</b>	148,3 м <sup>2</sup>
<b>Living room and kitchen:</b>	52,98 м <sup>2</sup>
<b>Bedroom - 1:</b>	23,57 м <sup>2</sup>
<b>Bedroom - 2:</b>	17,8 м <sup>2</sup>
<b>Bedroom - 3:</b>	11,84 м <sup>2</sup>
<b>Bathroom - 1:</b>	10,0 м <sup>2</sup>
<b>Bathroom - 2:</b>	5,72 м <sup>2</sup>
<b>Bathroom - 3:</b>	8,54 м <sup>2</sup>
<b>Balcony - 1:</b>	7,97 м <sup>2</sup>
<b>Balcony - 2:</b>	9,88 м <sup>2</sup>

## PENTHOUSE - 3BR-CORN



### Корпус В

С 1-го по 7-й этаж



<b>Area:</b>	149,25 м <sup>2</sup>
<b>Living room and kitchen:</b>	65,2 м <sup>2</sup>
<b>Bedroom - 1:</b>	24,72 м <sup>2</sup>
<b>Bedroom - 2:</b>	17,65 м <sup>2</sup>
<b>Bedroom - 3:</b>	13,88 м <sup>2</sup>
<b>Bathroom - 1:</b>	9,22 м <sup>2</sup>
<b>Bathroom - 2:</b>	6,37 м <sup>2</sup>
<b>Bathroom - 3:</b>	4,89 м <sup>2</sup>
<b>Balcony - 1:</b>	4,76 м <sup>2</sup>
<b>Balcony - 2:</b>	2,56 м <sup>2</sup>