

# VIP TROPİKA



Important: Renderings provided are not final design and may change.



# VIP TROPIKA

PROJECT NAME	VIP Tropika
TOTAL LAND AREA	7 Rai 4 Building
PROJECT DETAIL	1 Building, 7 Storey
LOCATION	Bangtao Beach, Phuket
RESIDENTIAL UNITS	300 Units
UNIT TYPE	A : 1 Studio 30 sq.m B : 1 Bedroom 45 sq.m C : 2 Bedrooms 60 sq.m D : 3 Bedrooms 90 sq.m E : Suite 139 sq.m

Important: Renderings provided are not final design and may change.

# SURROUNDING



- **Bangtao Beach**

The heart of the area, offering a long stretch of beach with beach clubs, local eateries, and water sports.

- **Layan Beach**

A quieter beach for relaxation, just north of Bangtao.



- **Boat Avenue Mall**

Boutique shopping and dining.

- **Central Porto De Phuket**

one of Thailand's top department store retailers. This open-air lifestyle & shopping destination



- **UWC - International School Phuket**

UWC Thailand students benefit from our programming, grounded in mindfulness, outdoor experiential education, sports and service learning.

- **HeadStart International school**

HeadStart International School is a good school, with outstanding features.” — Educational Development Trust, UK.



- **Bangkok Hospital Clinic Bangtao**

The general medical clinic offers the excellent primary care services to our valued patients.

- **Bumrungrad International Hospital Phuket**

BIH anticipates beginning construction in Q4 2024. Once complete,



## FITNESS



Important: Renderings provided are not final design and may change.

## KIDS CLUB



Important: Renderings provided are not final design and may change.



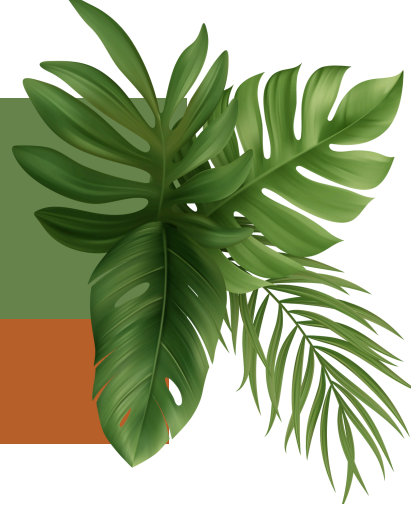
## CO WORKING



Important: Renderings provided are not final design and may change.

# TYPE A1

STUDIO 30 SQ.M



**STUDIO**  
TYPE A1



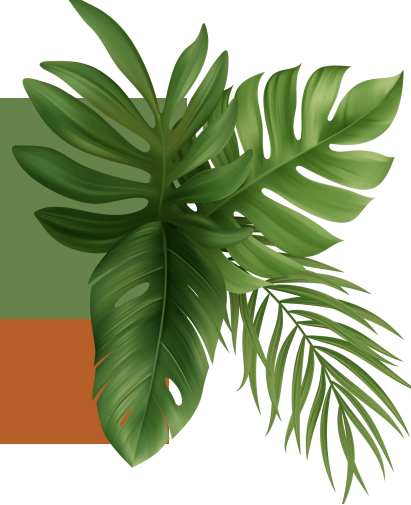
**STUDIO**  
TYPE A1



Important: Renderings provided are not final design and may change.

# TYPE A2

STUDIO 30 SQ.M



**STUDIO**  
TYPE A2



**STUDIO**  
TYPE A2



Important: Renderings provided are not final design and may change.

# TYPE B1

1 BEDROOM 45 SQ.M



**ONE BEDROOM**  
TYPE B1

**ONE BEDROOM**  
TYPE B1



Important: Renderings provided are not final design and may change.

# TYPE B2

1 BEDROOM 45 SQ.M



**ONE BEDROOM**  
TYPE B2



Important: Renderings provided are not final design and may change.



# TYPE C

2 BEDROOMS 60 SQ.M



**TWO BEDROOMS**  
TYPE C



Important: Renderings provided are not final design and may change.



# TYPE D

3 BEDROOMS 90 SQ.M



**THREE BEDROOMS**  
TYPE D

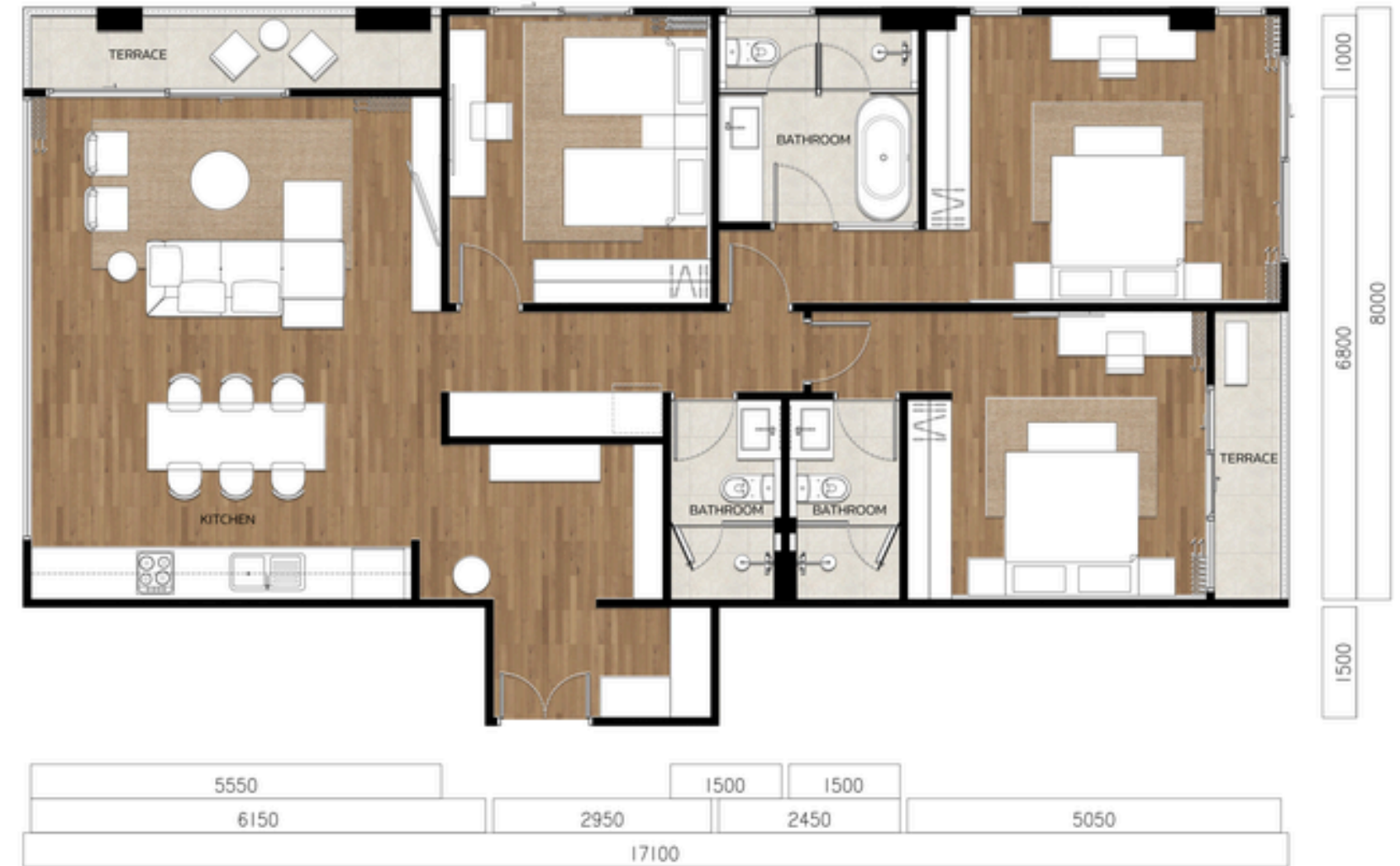
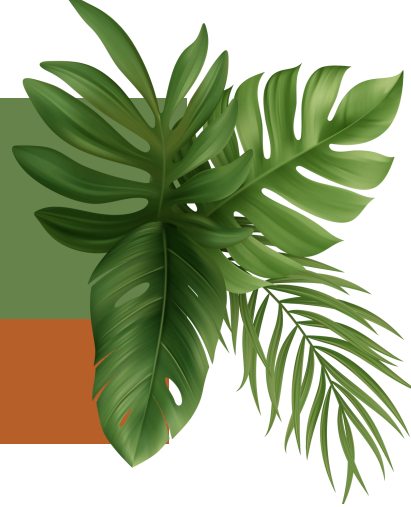


Important: Renderings provided are not final design and may change.



# TYPE E

SUITE 139 SQ.M



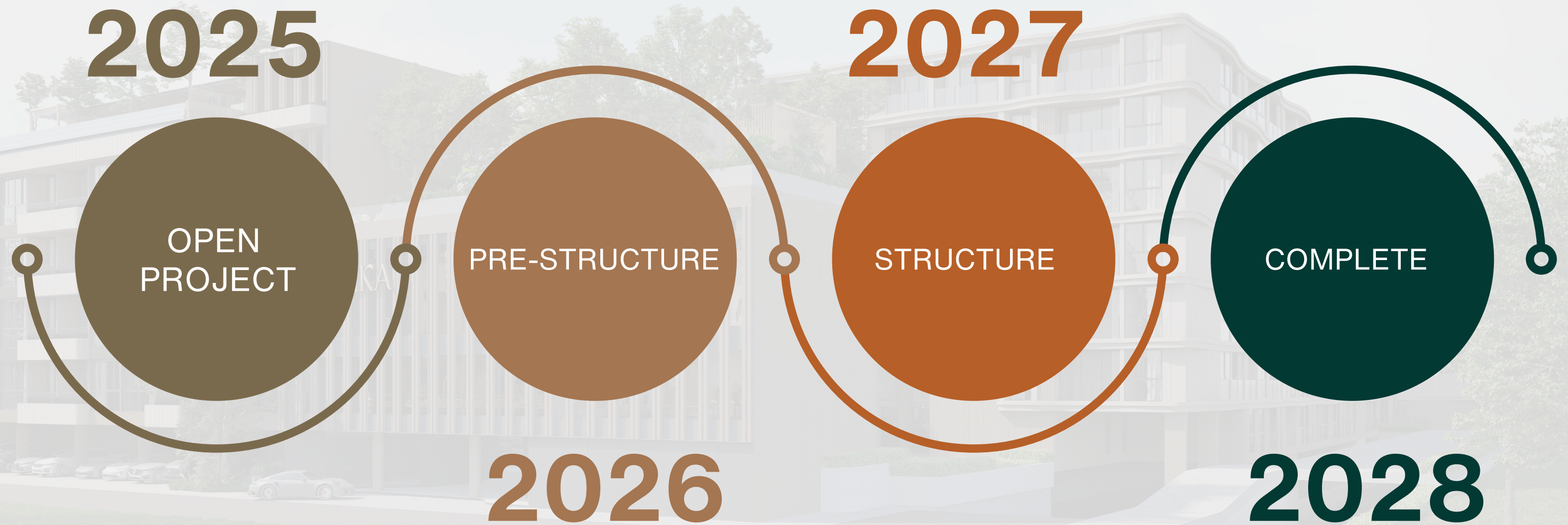
**SUITE**  
**TYPE E**



Important: Renderings provided are not final design and may change.



# PROJECT TIMELINE

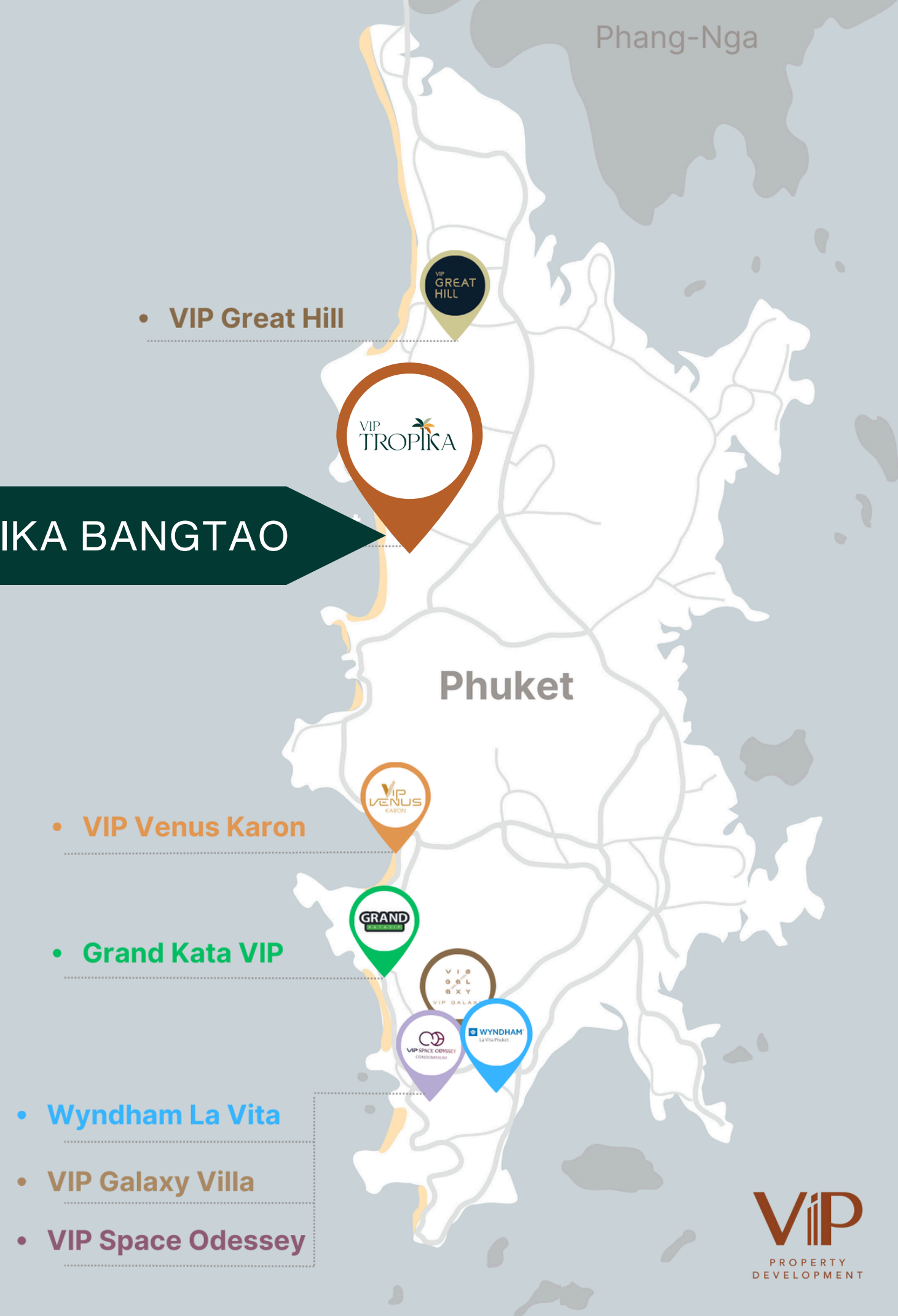


# PROJECT DISTRIBUTION

VIP Thailand Group was established in 2015 with the goal of providing high-quality properties to customers in Thailand and from around the world. Since then, we have completed 8 projects including boutique apartments, villa resorts, and stunning hotels. Whatever type of property you're looking for, we can help make your dream a reality.

Our concierge team is there for your every need, from urgent assistance to the most trivial requests so that you can enjoy the convenience and VIP lifestyle you've always dreamed of.

VIP TROPIKA BANGTAO



Important: Renderings provided are not final design and may change.



VIP  
PROPERTY  
DEVELOPMENT

VIP  
TROPICA

---

SALES OFFICE  
83/87, Thambon Rawai, Mueang, Phuket 83130, Thailand  
[WWW.VIPTHAILAND.COM](http://WWW.VIPTHAILAND.COM)